



Technical proposal No.

### DRILLING SWIVEL VB-125R1

Swivel is designed to retain a rotating drilling and other tool hanging with simultaneous supply of the operational fluid from the pump to the pipe string under drilling and oilfield enterprise conditions.

The swivel consists (Fig. 1) of the housing 1 with the feed line 2, a link 3 installed in the lugs of the housing 1 thought the link extender 15 with the possibility of swinging on the pivot studs 4, a stem 5 with the sub 6 mounted on the bearings 7, 8 and 9 with rotation in the housing 1, and the upper 10 and lower 11 seals. The top seal 10 is quick-detachable and connects to the feed 2 and stem 5 with the nuts 12 and 13.

#### Main technical features:

	<b>VB-125R1</b>
Statical lifting capacity kN (tf)	1250 (125)
Dynamic lifting capacity at 100 rpm, kN (tf)	850 (85)
Working pressure, PSI (bar)	5000 (350)
Stem maximum rotation speed c <sup>-1</sup> (rtm)	5 (300)
Stem feedthrough hole diameter, mm	75
Feedline feedthrough hole diameter, mm	75
Adapter sub feedthrough hole diameter, mm	D <sub>1</sub>
Stem coupling thread as per GOST 631-75	BT-127 Left
Coupling thread on the adapter - tool-joint thread as per GOST 50864-96	Z-D
Coupling thread of the side feedline as per GOST 633-80	NKT 89
Coupling thread on the feedline under the measure while drilling as per GOST 633-80	NKT 60
Operating ambient temperature, °K (°C)	233 (-40)÷343 (+70)
Weight, kg, max.	433

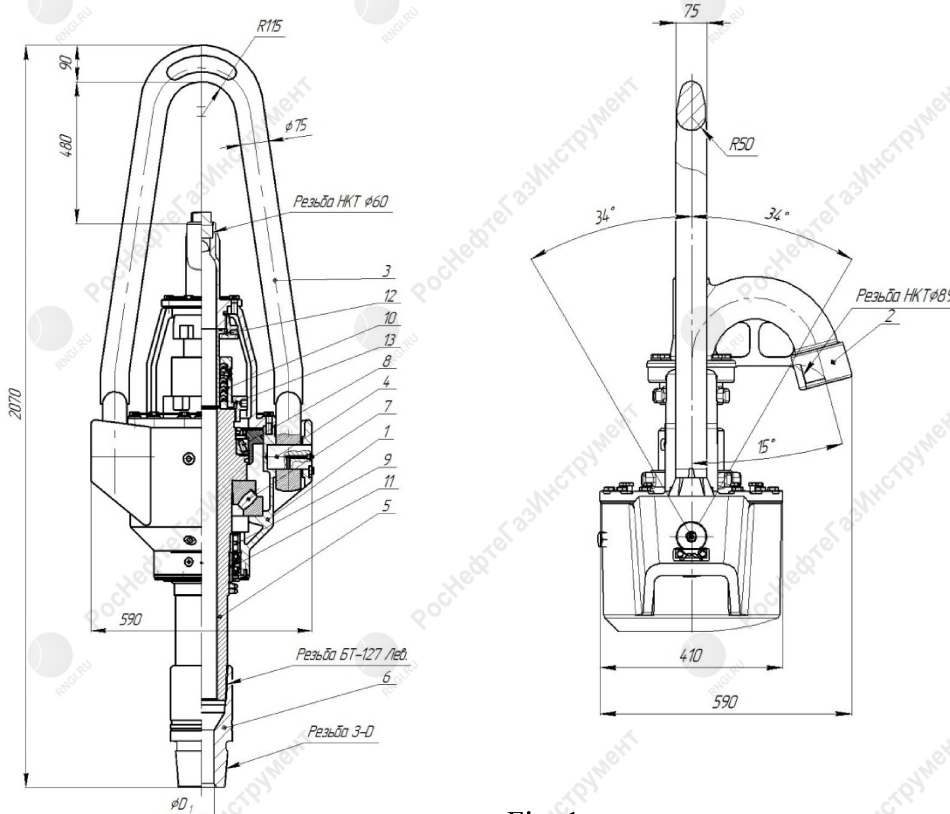


Fig. 1



Main technical features of the stem sub:

Table 2

Adapter sub	Tool-joint thread D GOST 50864-96	D1, mm	Include in the set
VB-125R1.00.29	Z-73 Left	36	<input type="checkbox"/>
VB-125R1.00.27	Z-76 Left	45	<input type="checkbox"/>
VB-125R1.00.28	Z-86 Left	54	<input type="checkbox"/>
VB-125R1.00.30	Z-88 Left	54	<input type="checkbox"/>
VB-125R1.00.26	Z-102 Left	54	<input type="checkbox"/>
VB-125R1.00.31	Z-108 Left	54	<input type="checkbox"/>
VB-125R1.00.32	Z-117 Left	58	<input checked="" type="checkbox"/>
VB-125R1.00.25	Z-121 Left	75	<input type="checkbox"/>
VB-125R1.00.09	Z-133 Left	80	<input type="checkbox"/>
VB-125R1.00.33	Z-147 Left	80	<input type="checkbox"/>

Feedline subs (fig. 2), adapter sub under BRS2" (fig. 3) and adapter sub from BRS2 (fig. 4) may be delivered at consumer's request.

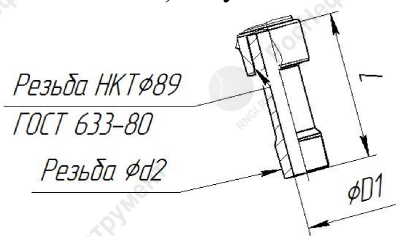


Figure 2

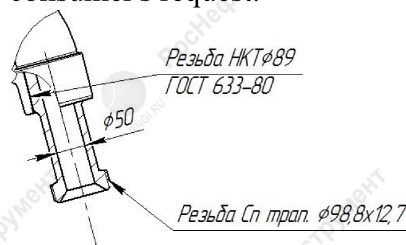


Figure 3

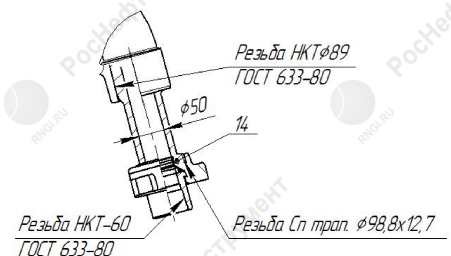


Figure 4

Main technical features of NKT (pumping and compression pipe) adapter subs to the feedline:

Table 3

Adapter sub	L1, mm	D1, mm	Thread d2	Drawing	Include in the set
N NKT89 x N NKT89	252	75	NKT-89 GOST 633-80	2	<input type="checkbox"/>
N NKT89 x N NKT73	212	60	NKT-73 GOST 633-80	2	<input type="checkbox"/>
N NKT89 x N NKT60	212	50	NKT-60 GOST 633-80	2	<input type="checkbox"/>
N NKT89 x NBR2"	285	50	-	3	<input type="checkbox"/>
N NKT89 from BRS2"	285	50	NKT-60 GOST 633-80	4	<input type="checkbox"/>
N NKT89 x N LP3"	252	75	LP 3" APIspec 5B	2	<input checked="" type="checkbox"/>

**Completeness:**

- 1) Drilling swivel VB-PSI – 1 pc;
- 2) Set of spare parts kit:
  - Nozzle VB-125R1.01.01– 1 pc;
  - Pump bucket BV-125R1.01.06 – 4 pcs;
  - Ring 095-105-58-2-3 GOST 18829-73 – 2 pcs;
- 3) Operating instruction – 1 pc;