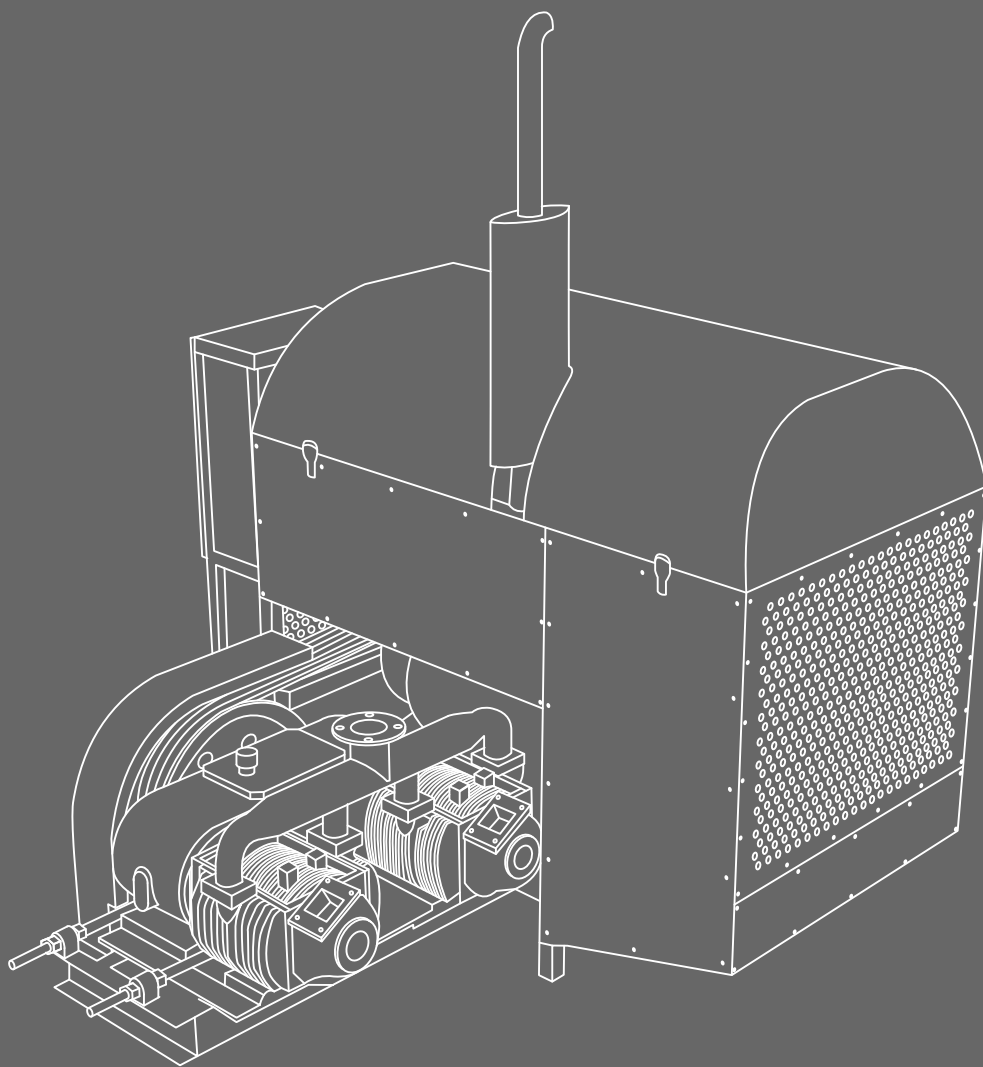




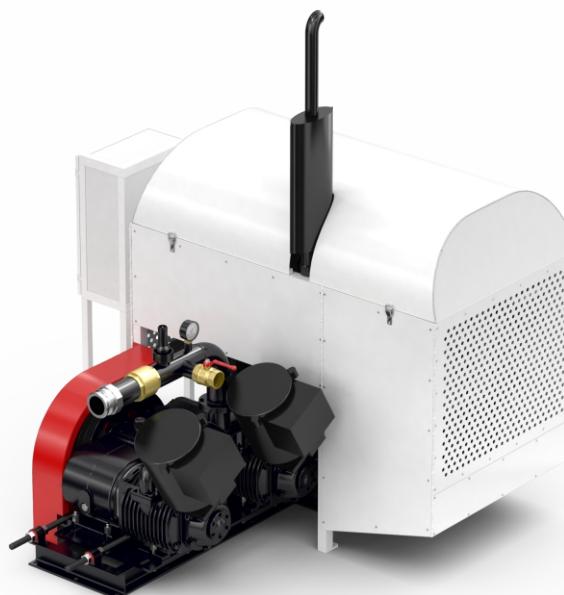
RNGI



The compressor unit

UK-12R1

UK-12R1 SERIES THE COMPRESSOR UNIT



The compressor unit UK-12R1

The compressor unit UK-12R1 designed for use in cement trucks and other vehicles. The unit consists of a frame with a diesel-driven compressor mounted on it, a weather-proof casing, air handling systems for receiving and pumping air (optional), and control systems. Loading and unloading of containers is pneumatic, carried out by vacuuming the vessels (option) and injecting air into them, respectively.

For its transportation, any suitable vehicles can be used (roads of 1-5 categories), as well as railway and waterborne carriages. The container has appropriate fasteners for loading and unloading and transportation according to GOST 20527-82 with corner fittings, or according to GOST 18579-79 with rimmed nodes. The compressor unit is mounted on the frame of a cement truck.

In order to ensure safe operation of the compressor and its unloaded startup (mandatory condition), a manifold is installed on its outlet equipped with check and safety relief valves, as well as a ball cock.

Technical specifications:

Parameter name	UK-12R1
Full weight, kg, at most	1500
Overall dimensions, mm	2650x2100x2400
Compressor	KM-12-2R1
- type	Pendulum
- capacity, m ³ /min, at least	12
- pressure, MPa (kg/cm ²), at most	0,2 (2,0)
- speed, rpm, at most	1000
Diesel engine:	
- brand	D-245.5
- maximum speed, rpm	1400
- rated capacity, kW	65
- maximum torque, Nm	397
- specific fuel consumption at rated power mode, g/kW*h	217
- cooling type	water
Fuel tank capacity, l	90
Maximum pressure of the product feed pneumatic system, MPa (kg/cm ²), no more	0,2 (2,0)

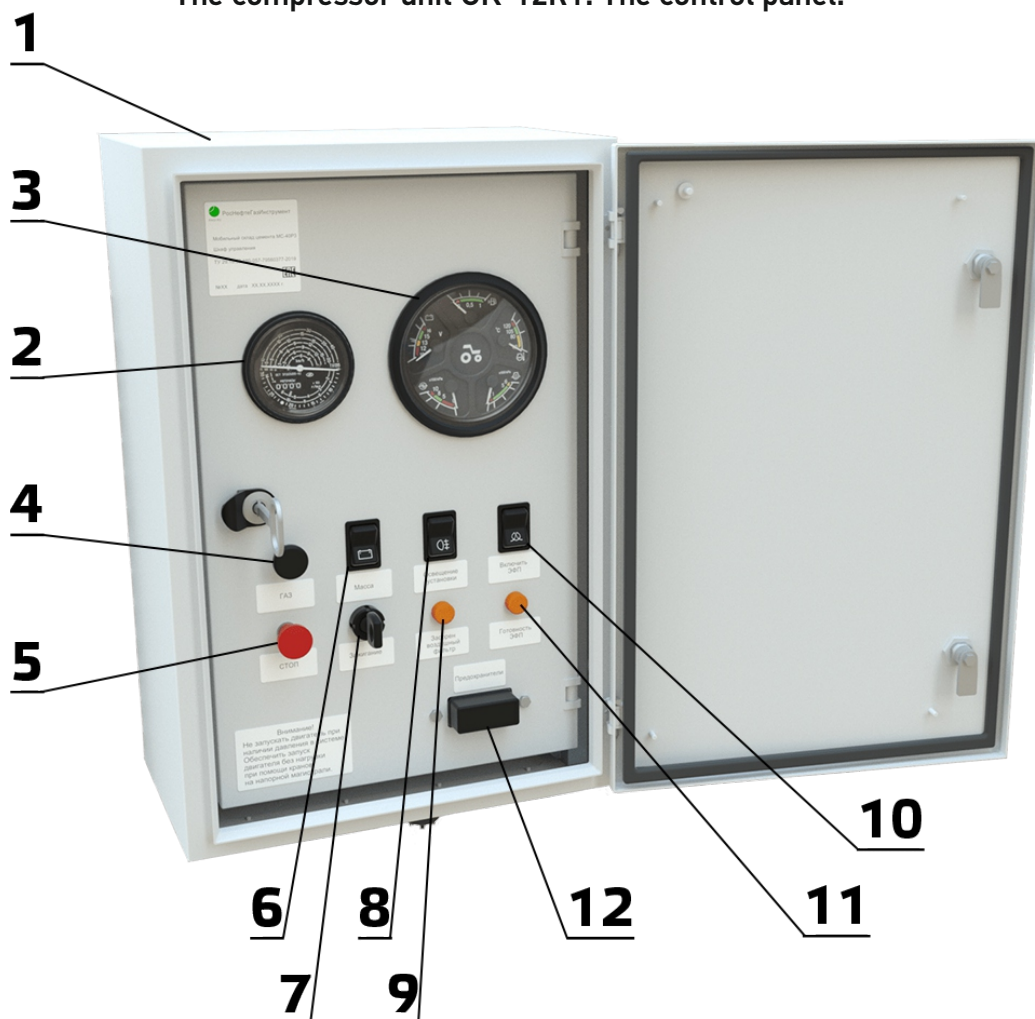
The compressor unit UK-12R1. Structure.



Picture 1 - The compressor unit UK-12R1.

1	Diesel engine D245.5
2	Compressor KM-12-2R1
3	Control panel
4	Fuel tank
5	Filling chest
6	Muffler with exhaust pipe
7	Mounting for diesel-engine drive and compressor
8	Flame start system
9	Coarse filter (2 pcs.)
10	Female camlock fitting Dn 75
11	Safety valve
12	V-belt drive
13	Storage battery (2 pcs.)
14	Diesel cowl
15	Check valve
16	T-socket
17	Protective cover for belt drive
18	Belt-tensioning bolts

The compressor unit UK-12R1. The control panel.



Picture 2 - The compressor unit UK-12R1. The control panel.

1	Electrical locker
2	Tachometer with hour counter
3	Instrument cluster (oil pressure, emergency oil pressure, coolant temperature, emergency coolant temperature, fuel level, low fuel level indicator, battery charge indicator)
4	Hand throttle (high-pressure fuel pump wire)
5	Emergency brake (high-pressure fuel pump wire)
6	Mass
7	Starting lock
8	Turn on lighting
9	ICE air filter clogging indicator
10	Turning on flame start system
11	Flame start system indicator of the heating spiral
12	Fuse box

The compressor unit UK-12R1. Advanced features.

- | | |
|--------------------------|--|
| <input type="checkbox"/> | Installation of the coupling device on the diesel-engine drive |
| <input type="checkbox"/> | Compressor vacuum processing function due to the installation of a suction tube and a fine filter |
| <input type="checkbox"/> | Installation of a Webasto preheater or its equivalent on an internal combustion engine |
| <input type="checkbox"/> | Electric heater for internal combustion engines PBN "Severs MZ" for 3 kW and 220 Volts ((Powered from an external reference source)) |
| <input type="checkbox"/> | Installation of complementary toggle switches for electric vibrators |
| <input type="checkbox"/> | Emergency stop with a mechanical flap on the intake manifold. |
| <input type="checkbox"/> | Fire alarm |
| <input type="checkbox"/> | Fire-fighting squibs |
| <input type="checkbox"/> | Fuel tank, batteries, air filtration system and air supply piping installed locally |
| <input type="checkbox"/> | Spark killer on the engine muffler |
| <input type="checkbox"/> | The noise maker on the muffler |
| <input type="checkbox"/> | Insulation with slag wool and fire-resistant plywood |



RNGI

phone:
+1 (512) 861-19-64

e-mail: manager@rngi.net
www.rngi.net

