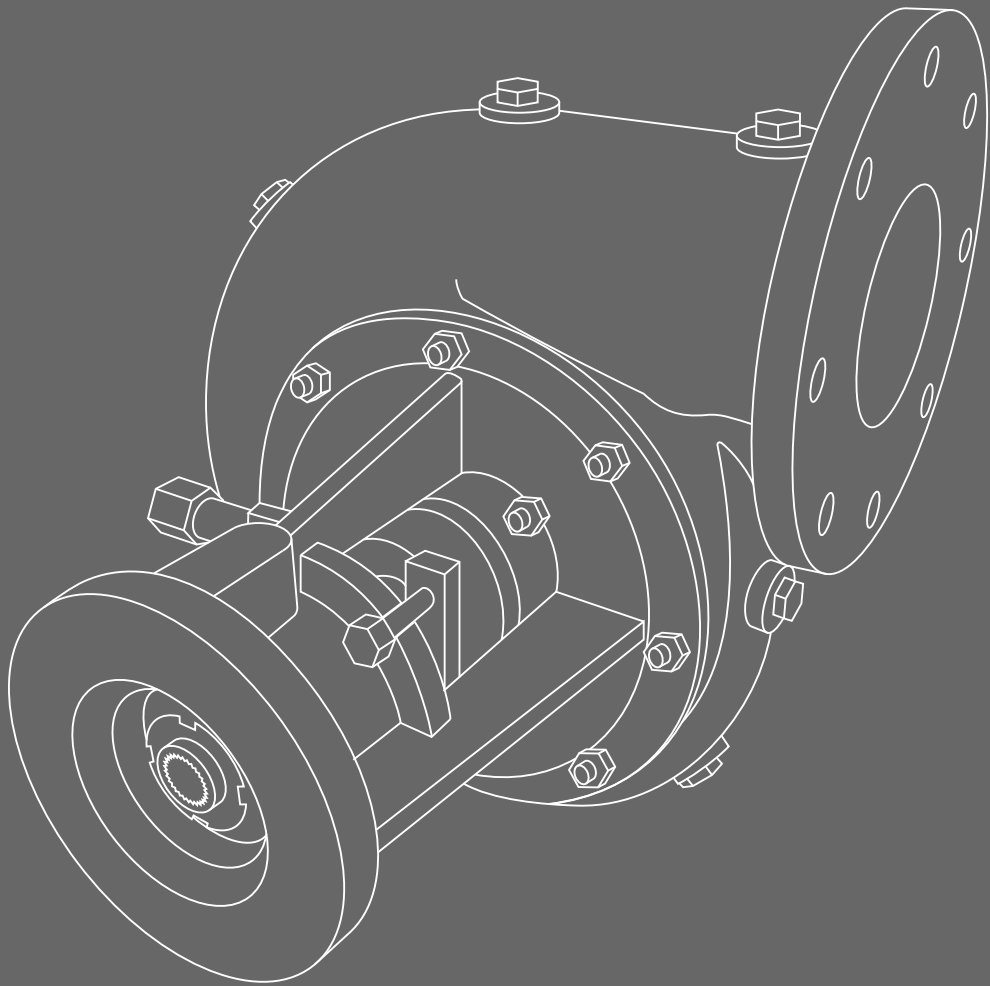




RNGI



Centrifugal pump

NC-50R1

NC-50R1 SERIES CENTRIFUGAL PUMP

Centrifugal pumps of **NC-50R1** series is intended to pump various liquids:

- abrasive hydraulic fluids (clay and gravel mortars, mixtures of water and sand, ore, etc.);
- flushing liquid used in the course of well drilling;
- household and industrial waste waters;
- spent flushing liquid (into cyclone plant to clean it of drilled solids);
- cement mortars.

Advantages of centrifugal pump NC-50R1:

- simple maintenance;
- light weight;
- compact size;
- extreme durability;
- minimal installation space requirements;
- all parts are steel casted;
- stainless steel impeller;
- increased wearing resistance of pump components;
- horizontal or vertical layout;
- versatile, modular design that allows customers to purchase only the parts necessary for repairs;
- ability to alter rotation direction, which is possible because it is simple to install an impeller suitable for the necessary rotation and volute direction (only the impeller is to be replaced, while all other parts remain the same);
- exposed impeller.

Pumped fluid properties:

hydraulic fluid density, kg/m³

temperature, °C

solid particle content

solid particle maximal size, mm

up to 1500

+5 ... +55

up to 60%

at most 4

Technical specifications:

Pump overall dimensions (LxWxH), mm

Inlet port diameter, mm

Outlet port diameter, mm

Impeller diameter, mm

Maximal speed, rpm

Weight, kg, ±3%

Maximal head, m

Maximal flow, m³/h (lps)

Component materials:

Impeller

Other components (отливки)

Остальные детали (кроме отливок)

266x250x232

76 (3") ASME/ANSI B1.20.3

50 (2") ASME/ANSI B1.20.3

165 (6 1/2")

5000

25

105

50 (15)

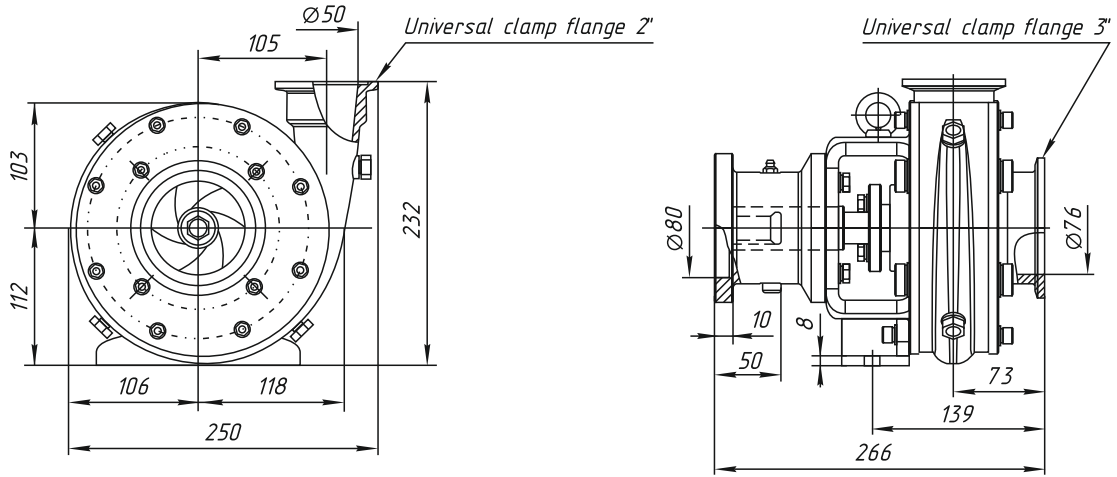
20H13L

40HL

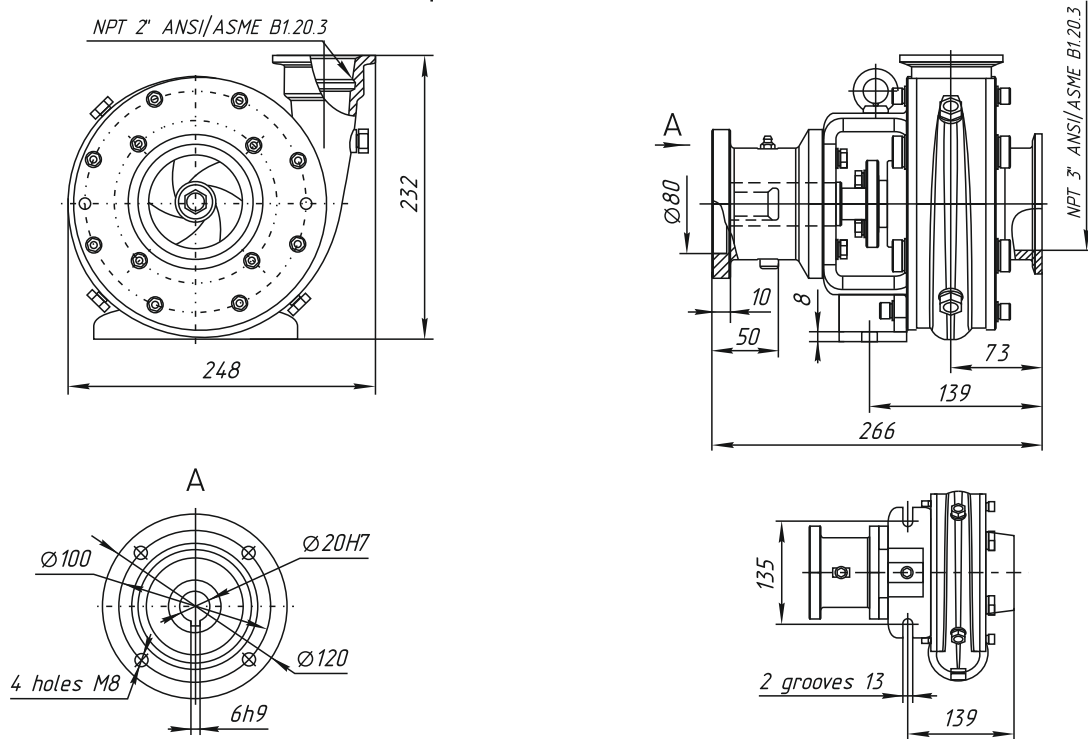
40H

Centrifugal pump NC-50R1 (3" x 2" x 6 1/2"). Dimensions.

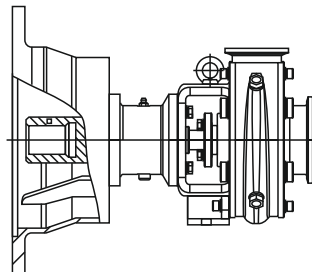
Picture 1a
Flanged pump version



Picture 1b
Pump version with internal thread



Picture 2
Version for the electric motor
(See more pic. 1a и 1b)

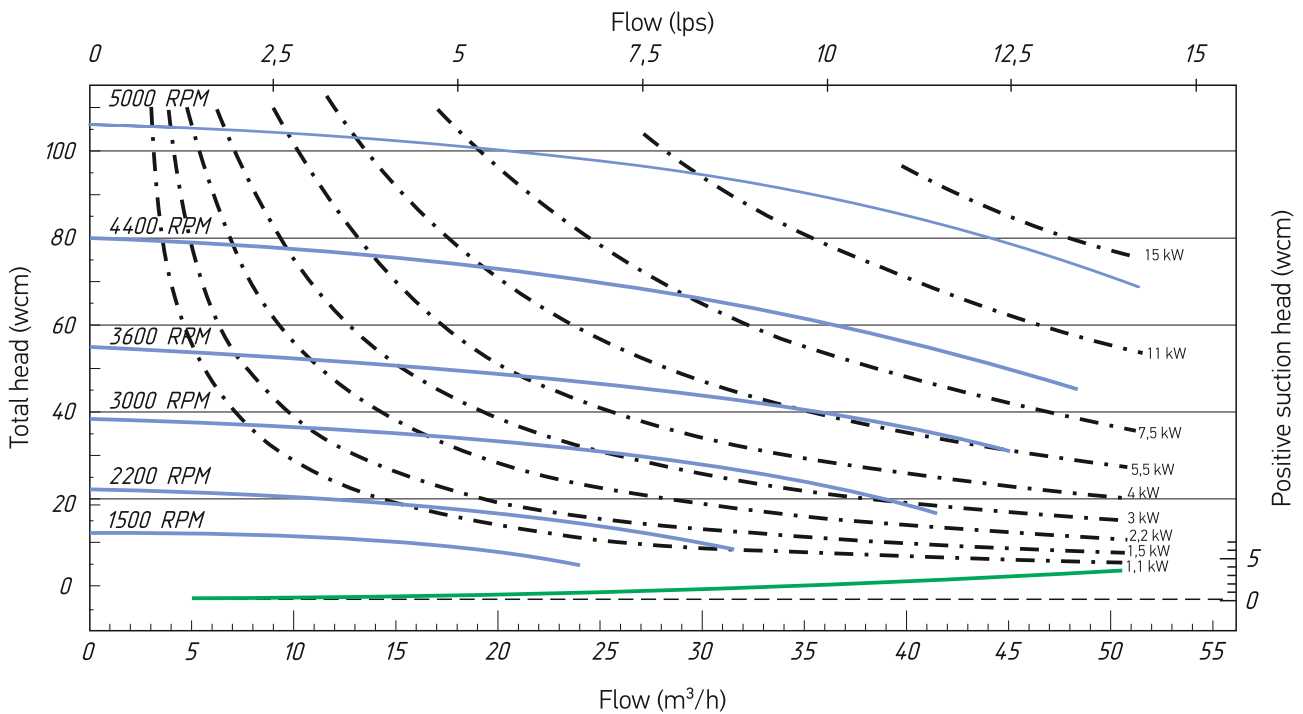


Pump modifications

Type size	Pic.	Connection	Rotation
NC-50R1-01	1	Connection to hydraulic motor 310.X.12.00.XX	C.W./C.C.W.
NC-50R1-02	2	Connection to electric motor	C.W./C.C.W.

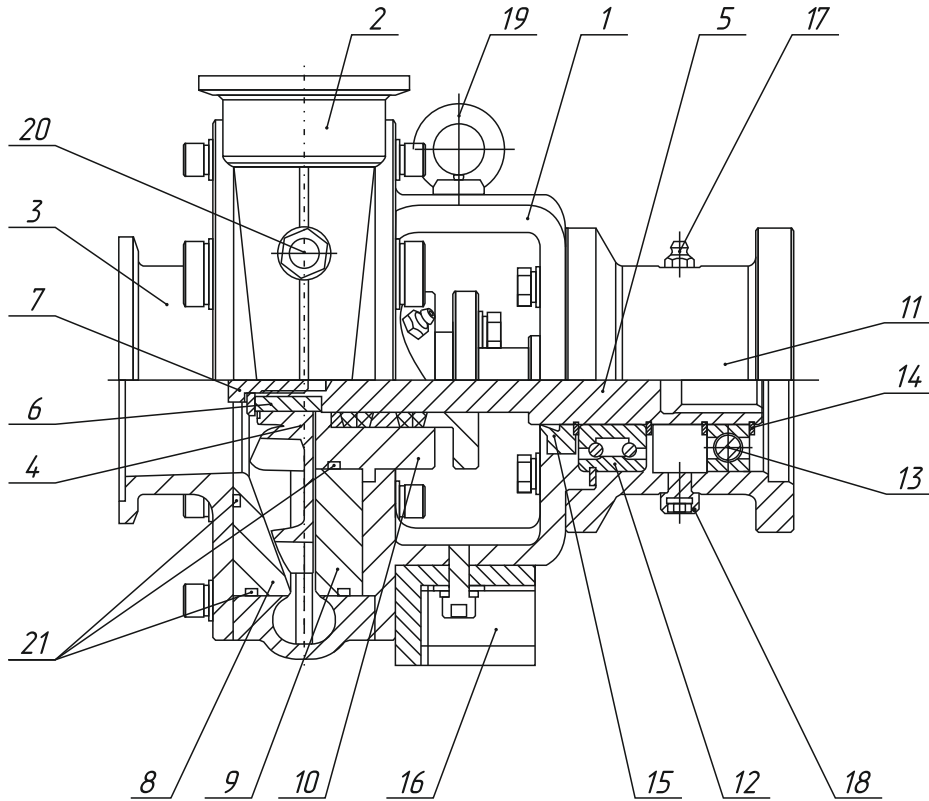
Additional parameters

Name	Pic.	The option of the performance
Type of end connections	1	Clamp flange
	2	NPT internal thread
Shaft seal type	-	Gland seal
	-	Mechanical seal



Pump card

Centrifugal pump NC-50R1 manufactured by Rosneftgazinstrument is a small and compact device intended for high pressure feeding of three-cylinder piston pumps involved in wells operation. It is specially designed to pump abrasive mixtures (sludge) and cement mortars. The pumps are manufactured by means of contemporary CNC equipment. Our centrifugal pumps are suitable for various industries.



Centrifugal pump NC-50R1 (3"x2"x6 1/2"). Structure.

1	stud
2	volute diffuser with outlet fitting 2"
3	inlet fitting 3"
4	full opening impeller 6 1/2"
5	spindle
6	impeller keystone
7	bolt for locking the impeller to the spindle
8, 9	front and rear wear-related shrouds
10	packing assembly
11	bearing cages
12, 13	rollers bearing
14	locking rings
15	boot
16	mounting bracket
17	grease cup
18	relief fitting
19	eyebolt for transportation
20	slug K3/8" GOST 6111-52
21	o-rings GOST 9833-73



RNGI

phone:
+1 (512) 861-19-64

e-mail: manager@rngi.net
www.rngi.net

