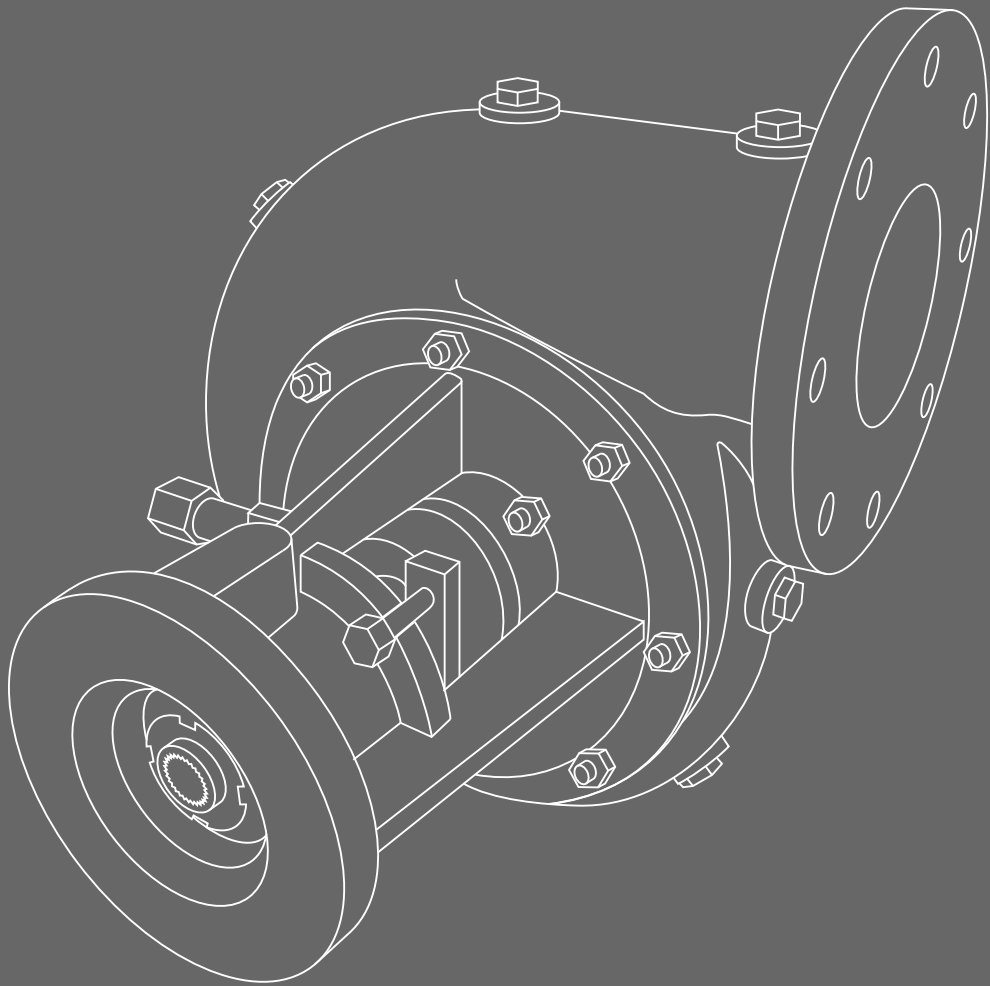




RNGI



Centrifugal pump

NC-203.22"R1

NC-203.22"R1 SERIES CENTRIFUGAL PUMP

Centrifugal pumps of **NC-203.22"R1** series is intended to pump various liquids:

- abrasive hydraulic fluids (clay and gravel mortars, mixtures of water and sand, ore, etc.);
- flushing liquid used in the course of well drilling;
- household and industrial waste waters;
- spent flushing liquid (into cyclone plant to clean it of drilled solids);
- cement mortars.

Advantages of centrifugal pump NC-203.22"R1:

- simple maintenance;
- light weight;
- compact size;
- extreme durability;
- minimal installation space requirements;
- all parts are steel casted;
- stainless steel impeller;
- increased wearing resistance of pump components;
- horizontal or vertical layout;
- versatile, modular design that allows customers to purchase only the parts necessary for repairs;
- ability to alter rotation direction, which is possible because it is simple to install an impeller suitable for the necessary rotation and volute direction (only the impeller is to be replaced, while all other parts remain the same);
- exposed impeller.

Pumped fluid properties:

hydraulic fluid density, kg/m³

temperature, °C

solid particle content

solid particle maximal size, mm

up to 2500

+5 ... +55

up to 60%

at most 20

Technical specifications:

Pump overall dimensions (LxWxH), mm

Inlet port diameter, mm

Outlet port diameter, mm

Impeller diameter, mm

Maximal speed, rpm

Weight, kg, ±3%

Maximal head, m

Maximal flow, m³/h (lps)

Component materials:

Impeller

Other components (castings)

Other components (except castings)

950x795x910

250 (10") ASME/ANSI B 16.5 Class 150

200 (8") ASME/ANSI B 16.5 Class 150

560 (22")

1500

400

110

800 (220)

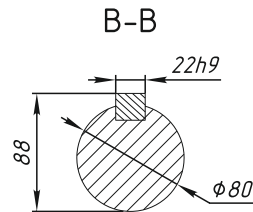
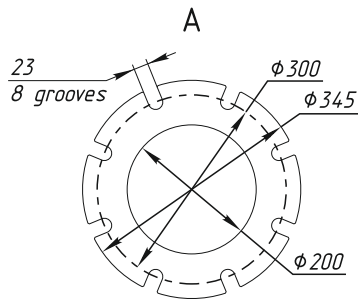
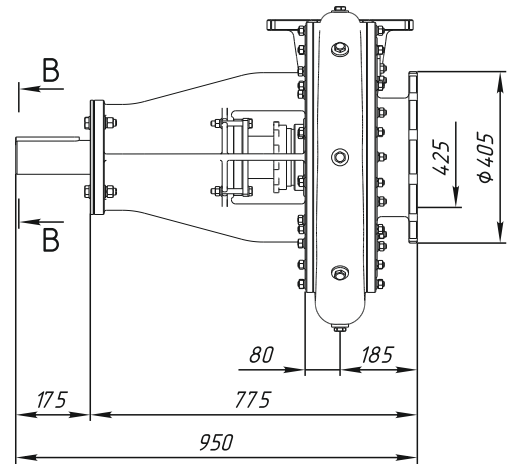
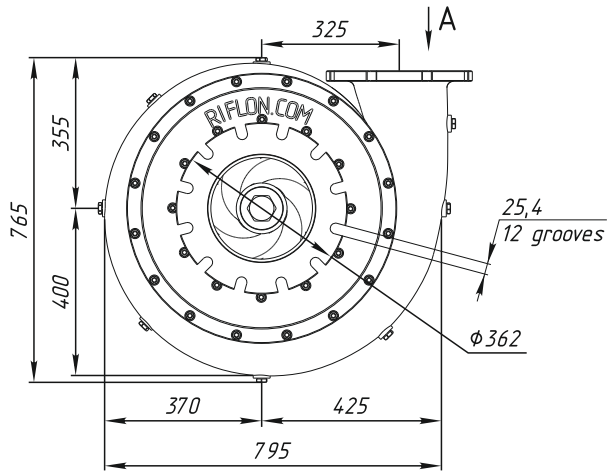
20H13L

40HL

40H

Centrifugal pump NC-203.22"R1 (10" x 8"). Dimensions.

Picture 1

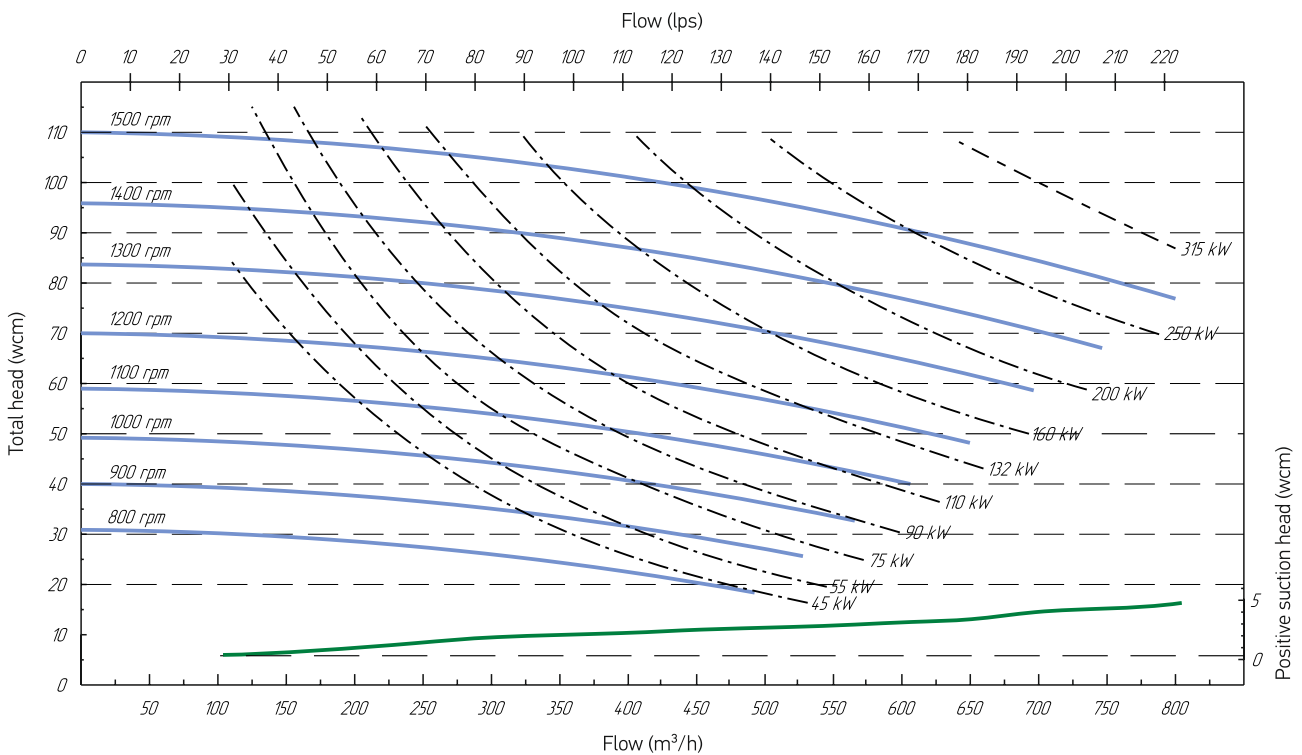


Pump modifications

Typesize	Pic.	Connection	Rotation	Select version
NC-203.22"R1	1	Coupling	C.W.	<input type="checkbox"/>
NC-203.22"R1-01	2	Coupling	C.C.W.	<input type="checkbox"/>

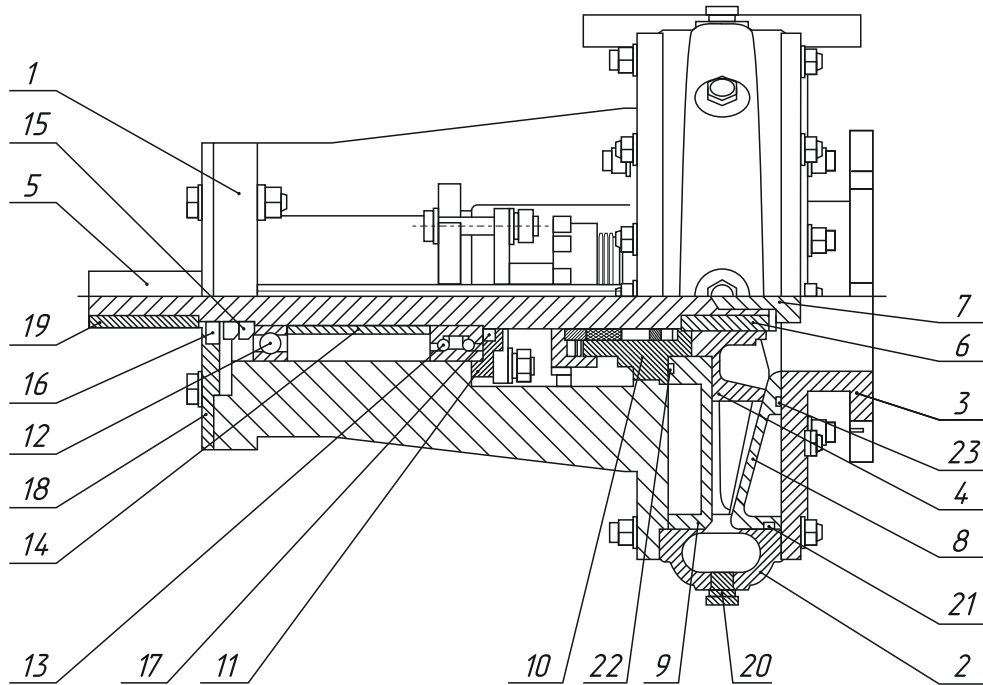
Additional parameters

Name	The option of the performance	Select version
Shaft seal type	Gland seal	<input type="checkbox"/>
	Mechanical seal	<input type="checkbox"/>



Pump card

Centrifugal pump NC-203.22"R1 manufactured by Rosneftgazinstrument is a small and compact device intended for high pressure feeding of three-cylinder piston pumps involved in wells operation. It is specially designed to pump abrasive mixtures (sludge) and cement mortars. The pumps are manufactured by means of contemporary CNC equipment. Our centrifugal pumps are suitable for various industries.



Centrifugal pump NC-203.22"R1 (10"x8"). Structure.

1	body
2	volute diffuser with outlet fitting 8"
3	inlet fitting 10"
4	full opening impeller 22"
5	spindle
6	impeller keysteel
7	bolt for locking the impeller to the spindle
8, 9	front and rear wear-related shrouds
10	packing assembly
11	cap
12, 13	bearings
14	spacing sleeve
15	clamping nut
16*, 17	boot
18*	protective washer
19*	coupling key
20	slug K3/8" GOST 6111-52
21, 22, 23	o-rings GOST 9833-73

* - for centrifugal pump NC-203.22"R1 using a spindle for a key



RNGI

phone:
+1 (512) 861-19-64

e-mail: manager@rngi.net
www.rngi.net

