

## KOSHT-R1 check valves

KOSHT-R1 check valves are designed for automatic overlap and pressurization of the drilling instrument tube channel in drilling oil and gas wells, and in maintenance and emergency works.

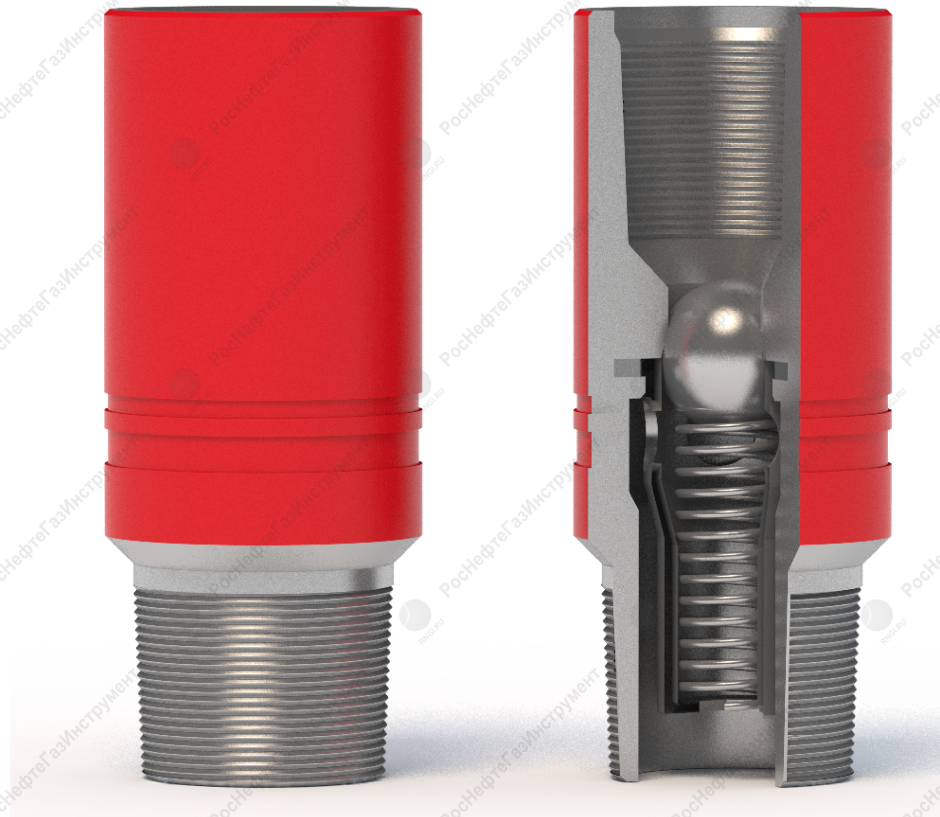


Fig. 1



## Technical characteristics

Table 1

Name	KOSHT-42R1	KOSHT-48R1	KOSHT-60R1	KOSHT-73R1	KOSHT-73BR1	KOSHT-89R1	KOSHT-114R1
Equivalent							
Working pressure, MPa (atm)	35÷105	35÷105	35÷105	35÷105	35÷105	35÷105	35÷105
Cargo capacity kN (tf)	140 (14)	180 (18)	300 (30)	500 (50)	500 (50)	600 (60)	1100 (110)
Weigh, kg	1.4	1.5	3.1	5	6	12	15
Length, mm	140	150	185	200	200	285	295
External diameter, mm	52	56	73	89	93.2	108	132
Drift size, mm	16	20	28	40	43	50	67
Coupling thread as per GOST 633-80;	NKT-42	NKT-48	NKT-60	NKT-73	NKT-73R	NKT-89	NKT-114
Housing material:	steel 40X GOST 4543-71, heat treated.						
Environment temperature, °C:	(-40) – (+70)						
Price net of VAT, r.							